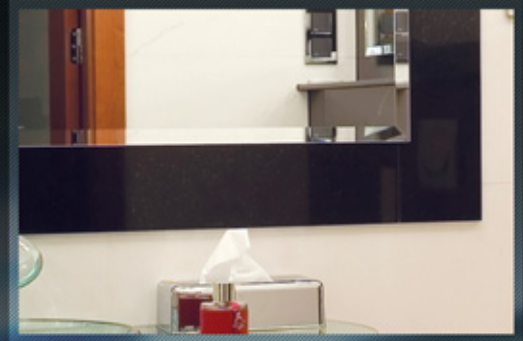


ENHANCED BEVELING FEATURES

Glaz-Tech Industries adds an additional feature to its existing fabricated edgework capabilities. Powered by modern technology and innovation, beveling capabilities have enhanced giving you further design options to capitalize on. Mirror, along with glass, can furthermore be beveled with far more flexibility giving the satisfaction to your desired aesthetic look. Interested in features that give you multiple options for edgework? Glaz-Tech Industries has the proven capabilities that successfully appeal to your design and edgework requirements.



REDEFINE YOUR DESIGNS
ADVANCED BEVELING CAPABILITIES



AVAILABILITY

Glaz-Tech Industries and State-of-the-Art Technology can bevel the following sizes :

- 1/2" ■ 3/4" ■ 1" ■ 1 1/4" ■ 1 1/2" ■ 2"

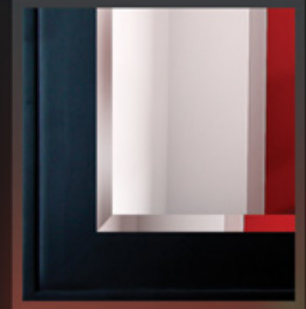
Double Bevel Available

Bevel on Guardian DiamondGuard® Anti-Scratch Mirror & Glass

RECOMMENDED FOR

- Bath Rooms ■ Shopping Malls ■ Large Mirrors
- Living Rooms ■ Dressing Rooms ■ Oval Mirrors
- Bed Rooms ■ Table Tops ■ Décor





STATE-OF-THE-ART BEVELING CAPABILITIES

- 1/2"
- 3/4"
- 1"
- 1 1/4"
- 1 1/2"
- 2"

POWERED by **WATERJET** TECHNOLOGY

- Provides accurate cutting for all your holes, notches, hinges and CAD drawings.
- Extremely versatile and capable of cutting through complex shapes.
- Versatility enhanced with CAD programming to cut at indicated measured coordinates.



CRAFTED EDGEWORK AVAILABILITY



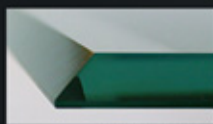
PENCIL EDGE



FLAT POLISH



BEVELED EDGE



MITRE EDGE



A LEADER IN MIRROR DISTRIBUTION

GUARDIAN DIAMONDGUARD®

Provides chemically inert applications for scratch resistance. DiamondGuard® enables you to retain your mirror's crisp elegance and reflectiveness while resisting scratches from everyday contact.

GUARDIAN ULTRA MIRROR™

Ultra Mirror™ can defend itself against the destructive elements that degrade a mirror's reflectance and lifespan. It's high reflectiveness, true image quality, humidity resistance and color availability exceeds all industry standards.

